



HEXAGON

Release guide

Release guide

M.App X 2022 Update 1

Version 16.7.1

19 October 2022

Contents

| | |
|---|-----------|
| About this release | 3 |
| M.App X | 3 |
| New platforms – M.App X 2022 | 3 |
| New technology – M.App X 2022 | 3 |
| Support for point clouds (requires LuciadFusion)..... | 3 |
| Display point clouds and features without a base image | 5 |
| Transitions now work in 3D..... | 5 |
| Shoebox deletion is now confirmed | 5 |
| Contents panel improvements | 5 |
| Automatically generated user interface for custom models..... | 6 |
| New geoprocessing management in the admin console..... | 7 |
| New technology – M.App X 2022 Update 1 | 9 |
| Active Directory authorization | 9 |
| Level of detail control for point clouds..... | 11 |
| Base image requirement removed..... | 11 |
| Display mode switching improvement..... | 11 |
| New graphic for file and service-based point cloud items | 11 |
| Improved switch elevation source dialog | 11 |
| Added detection of elevation source overlap for point clouds and features | 12 |
| System requirements | 13 |
| Issues resolved – M.App X 2022 (v 16.7.0) | 13 |
| Issues resolved – M.App X 2022 (v 16.7.1) | 17 |
| About Hexagon | 18 |

About this release

This document describes the latest enhancements, fixes, and system requirements for M.App X 2022 Update 1.

For information on new features, see the “New technology” section. For information on fixes that were made for this release, see the “Issues resolved” section. For information on hardware and software requirements, see the “System requirements” section.

This document is only an overview and does not provide all of the details about the product's capabilities. See the [product description](#), the [online help](#) and other documents provided with M.App X for more information.

M.App X

M.App X provides tools to exploit imagery and create imagery-derived information products and reports deployed in an enterprise platform for system integrators. All M.App X users can create and share information across the enterprise using the rich, web-based client application.

New platforms – M.App X 2022

M.App X 2022 supports Microsoft® Windows Server 2022.

New technology – M.App X 2022

User-facing improvements and additions

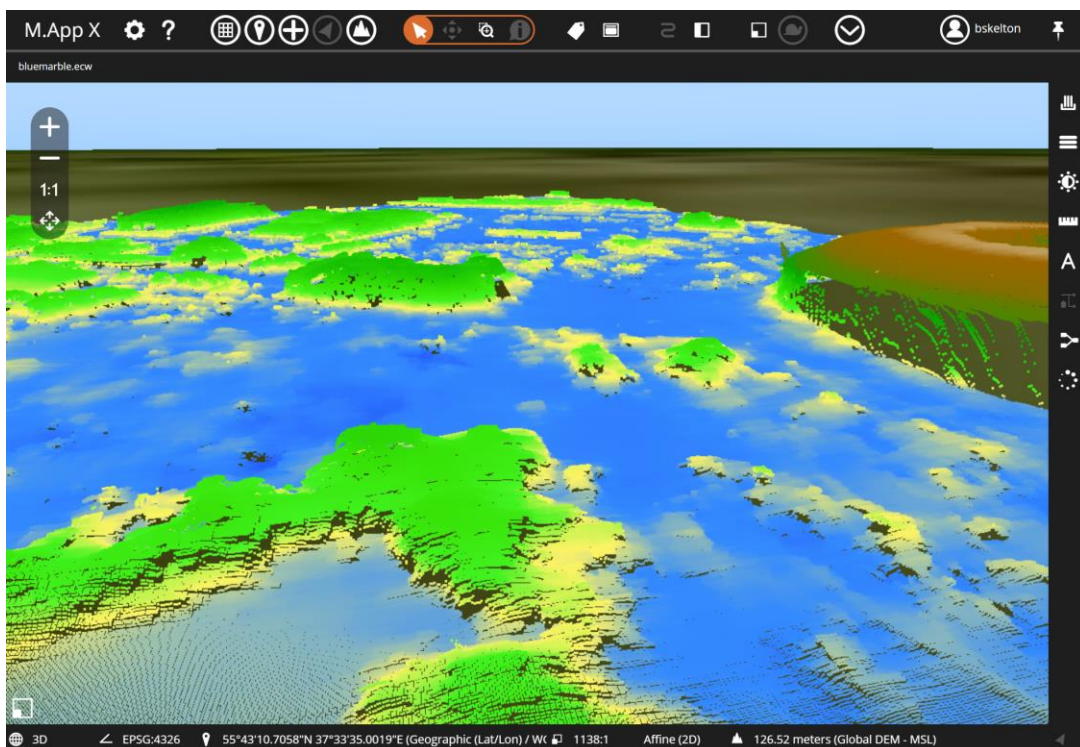
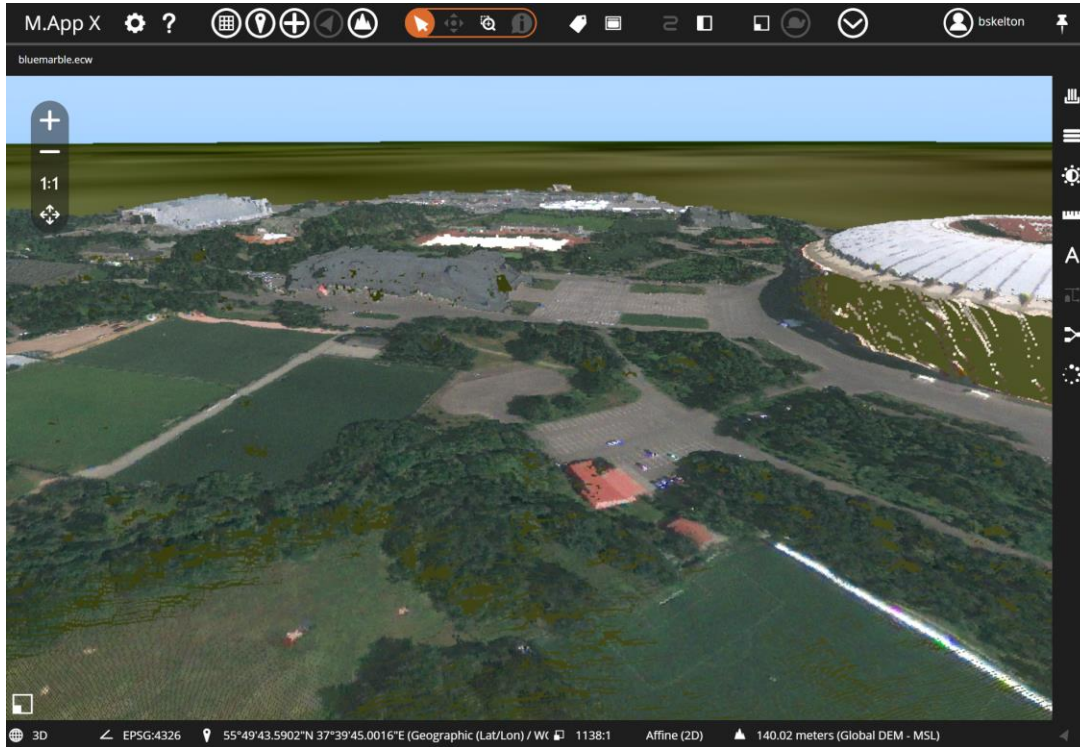
The improvements in this section describe changes that affect either the use of the client application or its performance.

Support for point clouds (requires LuciadFusion)

When a licensed copy of LuciadFusion is installed, users can leverage its capabilities to manage and visualize point clouds in M.App X. Point cloud files (i.e., LAS or LAZ) can be added to the shoebox, much as an image or a shapefile.



The file will be tiled by LuciadFusion and streamed to the M.App X client, where it can be visualized using a single color, RGB, intensity, height, or classification (depending on the dataset metadata). Display using RGB vs. height.



Display point clouds and features without a base image

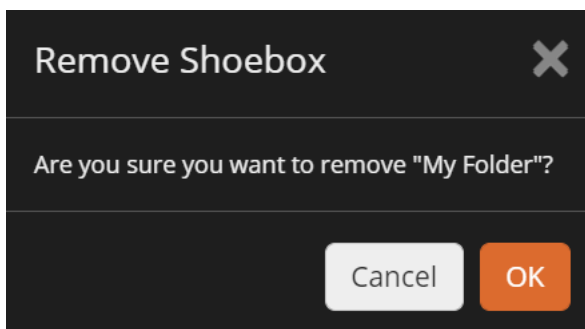
Previously, features could only be displayed on top of a base image, but with the addition of point clouds, it is much more likely that the point cloud data may be the only thing the user is looking at. The requirement for a base image was relaxed, and now it is possible to display both point clouds and features without a base image.

Transitions now work in 3D

The transition tools (swipe, fade, and flicker) now work in 3D as well as in 2D.

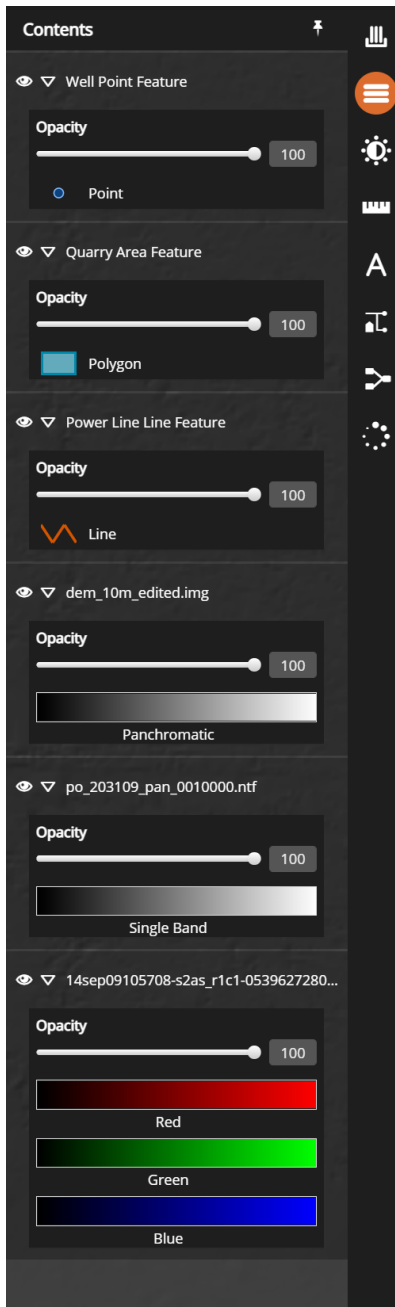
Shoebox deletion is now confirmed

Before deleting a shoebox, there is now a confirmation dialog that helps prevent accidental loss of data.



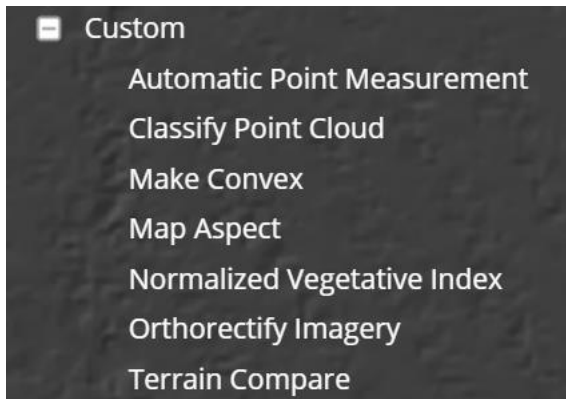
Contents panel improvements

The contents panel has been changed to show a legend for most data types, and feature and point cloud styling can now be changed using a new Adjustment button.

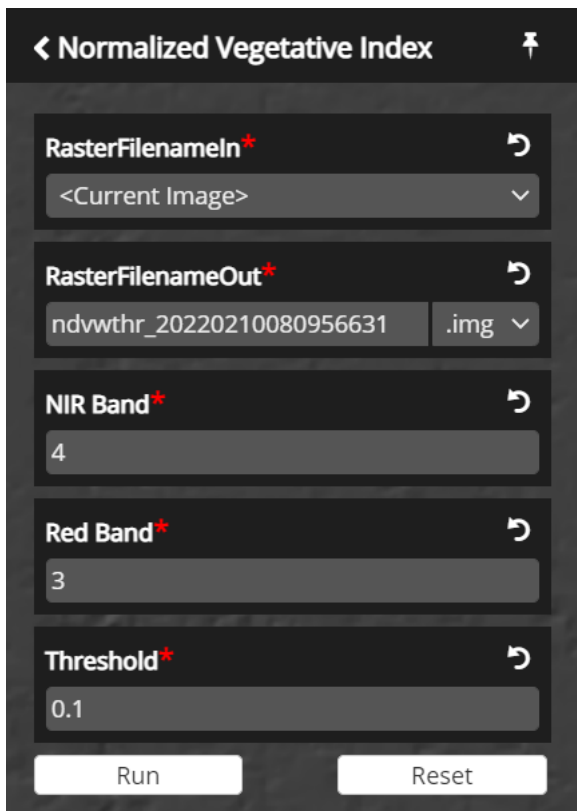


Automatically generated user interface for custom models

Spatial models can now be developed on the desktop with either ERDAS IMAGINE or GeoMedia and deployed to a M.App X installation using drag and drop into the geoprocessing section of the admin console. The custom models appear in the Geoprocessing panel.

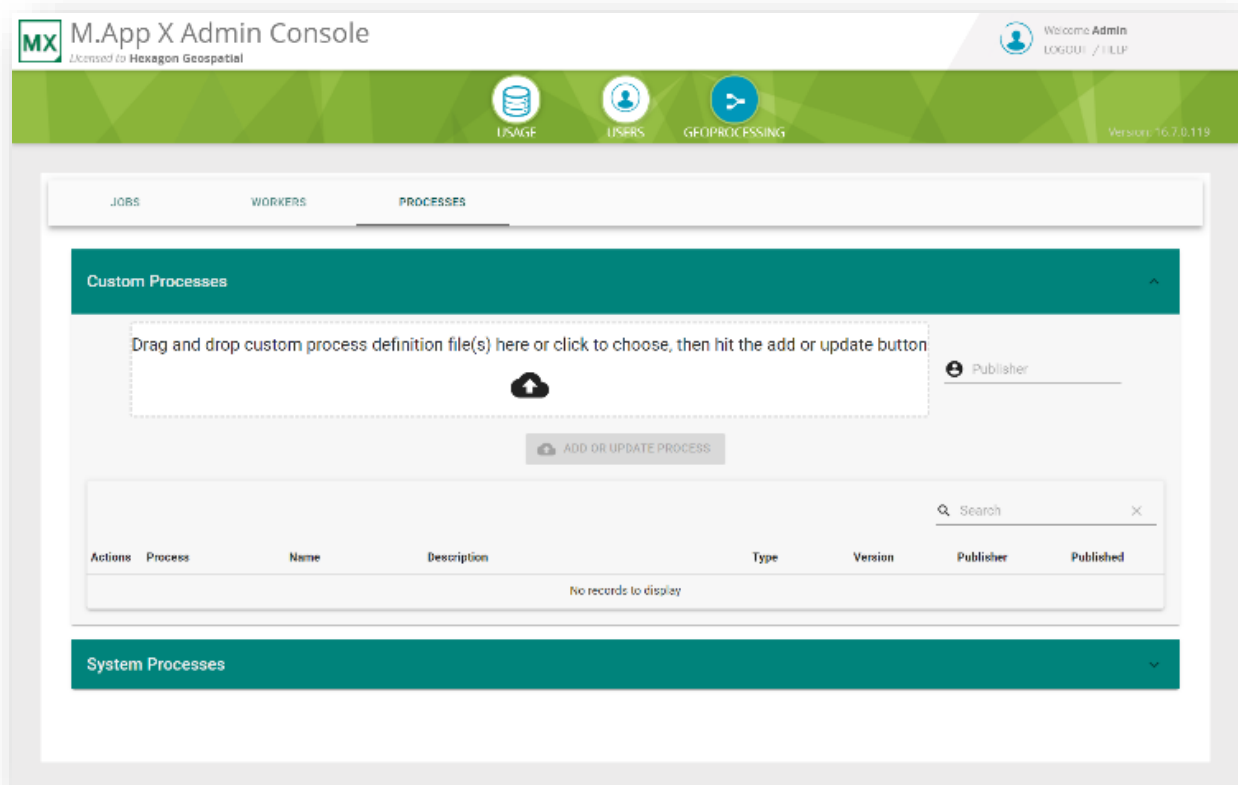


Clicking on the model will automatically create an input form from which the model can be run.



New geoprocessing management in the admin console

The M.App X administration console now has a new section for managing geoprocessing. This provides three types of functionality: managing running jobs, configuring geoprocessing workers, and managing spatial models. Running jobs for the whole system can be monitored or cancelled. Worker node information can be displayed, and some parameters can be modified. Spatial models can be added and deleted.



API improvements and additions

The following section describes changes made to the API that support integration and customization of M.App X.

- Added API allowing extension of support for new model input data type of custom geoprocessing panels.
- Added API allowing registration data in a Shoebox.
- Added API allowing addition of custom Color Ramps and Color Palettes for styling Point Cloud data.
- Added new UI widgets.
- Added API allowing custom tabs to the Add to Shoebox Dialog.

New technology – M.App X 2022 Update 1

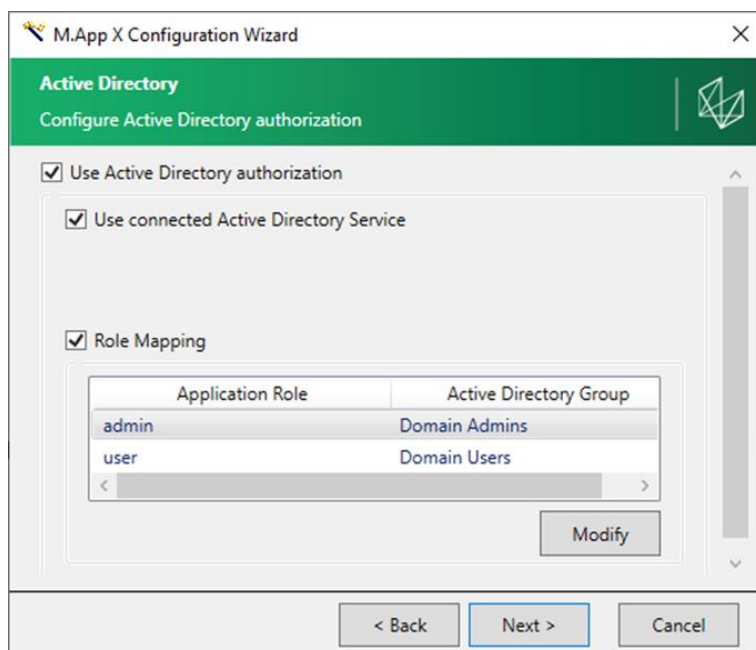
User-facing improvements and additions

The improvements in this section describe changes that affect either the use of the client application or its performance.

Active Directory authorization

With this update M.App X user accounts can be configured to authorize against a local instance of Microsoft's Active Directory. This allows a single source of authorization within an organization and avoids the duplication of accounts and reduces administration time and effort.

The Active Directory server is configured in the Configuration Wizard along with the name of the Active Directory groups that are to be mapped to the Admin and User roles. The Active Directory administrator assigns users to one of these two groups to determine their access to and role in the use of M.App X.



Active Directory accounts and local accounts can exist at the same time. The status of each account is presented in the "Authentication" column of the Users panel in the M.App X Admin tool.

M.App X Admin Console
licensed to Hexagon Geospatial

Welcome Brad Skelton
LOGOUT / HELP

USAGE USERS GEOPROCESSING Version: 16.7.1.62

DELETE NEW FILTER

| Name | Fullname | Email | Role | Authentication | |
|--|-----------------|---------------------------------------|-------|------------------|--|
| <input type="checkbox"/> admin | Admin | admin@example.com | Admin | Local | |
| <input type="checkbox"/> auto_test | Auto Test | justin.bridwell@hexagonusfederal.com | User | Local | |
| <input type="checkbox"/> azusmanis | Andy Zusmanis | andy.zusmanis@hexagonusfederal.com | User | Local | |
| <input type="checkbox"/> bbrittain | Bryan Brittain | bryan.brittain@hexagonusfederal.com | User | Local | |
| <input type="checkbox"/> bchaplin | Bruce Chaplin | bruce.chaplin@hexagongeospatial.com | User | Local | |
| <input type="checkbox"/> bkumar | Bhagavath Kumar | bhagavath.kumar@hexagongeospatial.com | User | Local | |
| <input checked="" type="checkbox"/> bskelton | Brad Skelton | Brad.Skelton@hexagongeospatial.com | Admin | Active Directory | |
| <input type="checkbox"/> ctweedie | Chris Tweedie | chris.tweedie@hexagongeospatial.com | User | Local | |
| <input type="checkbox"/> eerwin | Elizabeth Erwin | elizabeth.erwin@hexagonusfederal.com | User | Local | |
| <input type="checkbox"/> ewittmann | Egon Wittmann | egon.wittmann@hexagon.com | User | Local | |
| <input type="checkbox"/> ianderso | Ian Anderson | ian.anderson@hexagongeospatial.com | User | Local | |
| <input type="checkbox"/> jbridwell | Justin Bridwell | justin.bridwell@hexagonusfederal.com | User | Local | |

When a new account is created, it can be designated as an Active Directory account. Also, logging in with any Active Directory account belonging to the group configured as the M.App X access group will automatically create a M.App X user account.

Add new user

Username*
johndoe

Fullname

Email

Role*
User

Authentication
Active Directory
Local
Active Directory

method
 Specify an initial password for the user
 Send an activation e-mail

Initial password

Retype password

Cancel Create

Level of detail control for point clouds

Point clouds can be very dense and hence contain very large amounts of points. With such data, if all of the points are rendered, it can be slow to pan around the scene. The level of detail control allows the number of points to be reduced, which can make the system more responsive.

Base image requirement removed

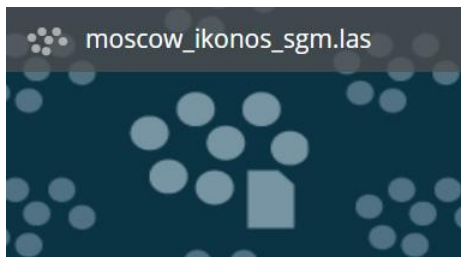
M.App X was initially built around displaying and manipulating images, and the assumption was that there would always be at least one image displayed. This assumption has been removed in this release so that one can easily display point clouds without any image in the display. This also applies to feature datasets.

Display mode switching improvement

M.App X supports multiple display modes for images: Image Space, Map Space and 3D. Since it is now possible to display data sets other than images, the available display modes are determined by what types of layers are present. For example, switching to Image Space is only possible if exactly one image is displayed; otherwise, the Image Space choice is disabled.

New graphic for file and service-based point cloud items

Point cloud shoebox items can be created from a discovered point cloud dataset (file-based) or from a given existing service (service-based). Only file-based shoebox items can be selected as an input to a geoservice. To help make this clearer, there now two different graphics for point cloud shoebox entries.



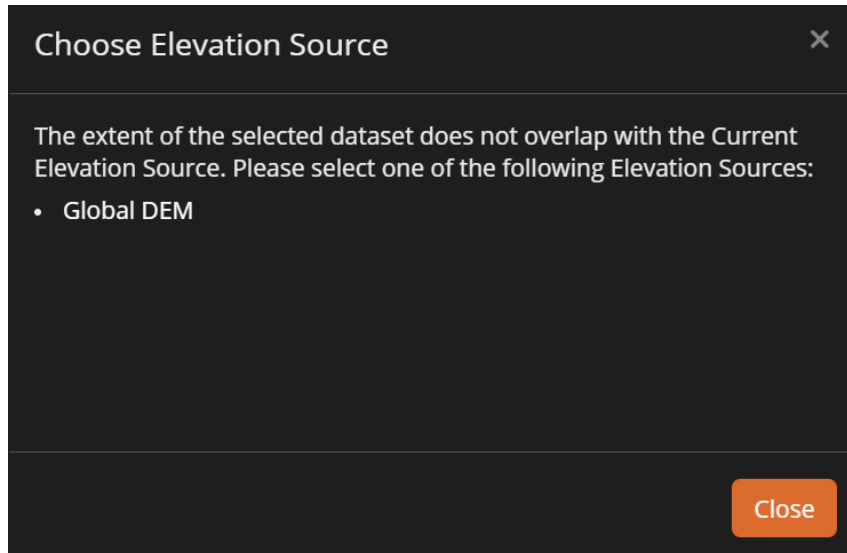
Improved switch elevation source dialog

The dialog used to select and or switch the elevation source has been improved. It now presents the options as a list of bulleted links, and it always includes the Global DEM in the list.



Added detection of elevation source overlap for point clouds and features

The elevation source is used to determine the Z value for the current cursor location. Because of this, when a dataset such as a point cloud or feature set is displayed, a check is made to see if the current elevation source overlaps the extent of the data set. If it does not, the user is notified of the mismatch, and a list of alternative elevation sources is displayed.



System requirements

Server

| | |
|--------------------|--|
| Computer processor | Xeon 2.9GHZ 4-core (or better) |
| Memory (RAM) | 16GB (or better) |
| Operating system | <ul style="list-style-type: none"> • Microsoft Windows Server 2016 • Microsoft Windows Server 2019 • Microsoft Windows Server 2022 |
| Software | <ul style="list-style-type: none"> • Internet Information Services (IIS) • JSON MIME Type Support • Java Runtime Environment Version 11 • Microsoft .NET Framework 4.7 |

Client

| | |
|----------------------|--|
| Computer processor | Any Intel or AMD x64 CPU running at 1.9GZ or greater |
| Graphics card | Any modern graphics card with full 32-bit support; a GPU is required to use the 3D features of the client |
| Network connectivity | An ethernet or WiFi connection of at least 10MBs is required for good performance (NOTE: This is not for connection to the Internet, just for connection from the client to server) |
| Operating system | <ul style="list-style-type: none"> • Windows 10 • Other operating systems such as MacOS and Linux are viable as the M.App X client runs entirely in the browser with no plug-ins • Windows 11 is viable |
| Browser | <ul style="list-style-type: none"> • Google Chrome (current versions) • Mozilla Firefox(current versions) • Other browsers such as Safari, Opera, and Microsoft Edge are viable as long as they are not mobile versions |

Issues resolved – M.App X 2022 (v 16.7.0)

| CR # | Summary | Description / How to Reproduce |
|----------|--|--|
| WG-11665 | In Light theme, the text in the feature information dialog isn't very clear. | The background has been made more opaque to improve contrast. |
| WG-11662 | Options in the Status Bar should be consistent and should be disabled in cases where not needed. | All of the fields in the status bar are now consistent in behavior. |
| WG-11658 | Label Name incorrect for Band selection in Adjustment panel for pseudocolor image type. | The pseudocolor band selection pulldown in the Adjustments panel now has the proper label. |

| | | |
|----------|--|--|
| WG-11636 | Nudgers don't show up in Firefox browser. | This has been corrected. |
| WG-11635 | Error handling issue when data search fails. | The error condition is now detected. |
| WG-11604 | The initial display in the map and the number for the Width of Stroke aren't in sync. | This has been corrected. |
| WG-11510 | Alternate data paths aren't shown if any data path isn't accessible. | If more than one data paths were configured and in those even one data path was not accessible for some reason then the other data paths which were actually accessible were also not shown in the Add dialog. |
| WG-11396 | Auto DRA check box switches OFF automatically and cannot be switched ON for some images. | The check box now remains in the selected state. |
| WG-11393 | Hidden layer with the legend expanded doesn't have a smooth transition while changing the order in the Contents panel. | The layers in the contents panel can now be smoothly rearranged. |
| WG-11390 | At times, clicking on a feature with Identify tool activated would pan away from the feature. | The view no longer moves when the identify tool is used. |
| WG-11389 | Grammar error/typo in smart bar overview tool tip. | The spelling in the tool tip has been corrected. |
| WG-11347 | Stereo layer name in contents panel does not match the name of the shoebox entry | The layer name in the contents panel now matches the name in the Shoebox. |
| WG-11326 | Metadata is blank for img format images. | An informational message is now displayed if no metadata is available instead of just presenting a blank screen. |
| WG-11324 | Errors in the Console while trying to remove a layer from the Contents panel after changing the order. | The errors no longer occur when removing the layer as described. |
| WG-11314 | Features with Polygon and LineString cannot be added to a FeatureCollection (only their multi counterparts) | These types of features are now handled correctly. |
| WG-11319 | Installation manual is launching release guide. | The proper document is now included. |
| WG-11291 | Typo in OLH in Configure Stereo Pair Shoebox Entry paragraph | This has been corrected. |
| WG-11286 | M.App X UI goes blank if the map report is launched second time with a non-georeferenced image displayed in the map. | This has been corrected. |



| | | |
|----------|--|--|
| WG-11285 | Need to have clear licensing messages based on the scenario rather than a generic one. | The licensing messages have been made clearer and more specific. |
| WG-11255 | With two rasters displayed, trying to change opacity for one raster after the other results in errors in the console. | This has been corrected and errors are no longer thrown. |
| WG-11233 | Shoebbox name gets dimmed out after getting back from browsing the items contained in a NITF file. | Clicking on the filename now properly returns to the parent shoebbox entry. |
| WG-11232 | Nudgers in Firefox don't seem to work. | The nudger on number controls now work properly in Firefox. |
| WG-11207 | Warning message shows up while clearing the text in input field of Snail Trail dialog. | Warning messages are no longer generated in this scenario. |
| WG-11108 | Need a way to get the file names from the entries in the shoebbox if the tooltip of OFF. | Tool tips which carry information such as filenames now always display regardless of the preference. |
| WG-11043 | Altering the position of a layer would make it disappear in the Contents panel when displayed in 3D Mode. | The layer tile no longer disappears when moved in 3D. |
| WG-10855 | Add to shoebbox result list unchecks items when more results are being loaded in. | |
| WG-10849 | Fails to show appropriate results while searching for image data in files tab when user performs same operations on multiple browsers. | The correct results are now displayed. |
| WG-10824 | The coordinates field doesn't reset and still shows information even after map is cleared. | The coordinate field is cleared when the map is cleared. |
| WG-10783 | Alignment of the Show Related Images dialog isn't good in Split view mode. | The Show Related Images dialog now scales appropriately for the view size. |
| WG-10744 | Update OLH for the behavior when Mosaic is run with Polygon Areas File option. | The help now describes that after generating multiple outputs the user must discover and add them to the shoebbox. |
| WG-10645 | It could get difficult to select Text with Arrow Annotation element for editing. | The arrow rendering has been modified to avoid this problem. |
| WG-10187 | Generate RSETs fails with TIF files stored on shared storage. | The problem in RSET creation in this scenario has been corrected. |
| WG-10070 | Lag is observed while moving the mouse over the Terrain Profile graph. | The rendering has been changed to remove this latency. |
| WG-9731 | Layout issue in collection bar causes collection cursor to appear on area covered by the bar itself. | The contents of the collection bar now reflow correctly when the bar is narrow as in split screen. |
| WG-9730 | Extended Grid remains on screen after Clear View is clicked | The grid is now removed when the view is cleared. |
| WG-9728 | Z column is not filled when collecting points in Adjust 3D | The Z value is now automatically collected and displayed. |



| | | |
|---------|--|---|
| WG-9692 | The legend should remain visible even after changing symbology. | The legend is no longer temporarily removed. |
| WG-9610 | Failed to change the attribute values for all the selected features when we select multiple features using Polygon/Rectangle tool. | This has been corrected. |
| WG-9479 | The parent selection isn't removed after adding the selected feature class. | The checkbox on the parent folder is now appropriately cleared. |
| WG-9354 | Map display isn't totally cleaned while performing Generate RSETs. | This has been corrected. |
| WG-9258 | Copy Move for annotations doesn't make a copy of the annotation file | The annotation file is now duplicated when it is copied. |
| WG-8864 | Need rephrasing in couple of dialogs. | The Elevation Sources dialog and its associated error message have been changed to make the text clearer. |
| WG-8644 | It could be a bit difficult to change/enter value for Offset field in Contents panel. | The stereo offset slider now updates only when the slider is released. This eliminates the problem. |
| WG-8588 | Fit to Frame after some pan and zoom while flicker option is ON, would stop flicker with the same option still shown as ON. | This has been corrected. |
| WG-8533 | The View Menu doesn't go away even after clicking in the map view. | This has been corrected. |
| WG-7809 | Stereo offset isn't being retained. | The offset is now retained for the image pair while it is displayed. |
| WG-7691 | Create Slope Map output file name field resets when process finishes | The output name is not changed until a new input is given. |
| WG-7688 | Raster Expurgation automatically resets output file name inputs after it runs | The output name is not changed until a new input is given. |
| WG-7687 | Remove Elevation Spikes automatically resets output file name inputs after it runs | The output name is not changed until a new input is given. |
| WG-6774 | Scroll bar in the extended grid panel does not appear in the correct place | The scrollbar is now in the proper location. |
| WG-1210 | Process status does not stop spinning when an error has occurred. | Errors are now detected and the status stops spinning. |

Issues resolved – M.App X 2022 (v 16.7.1)

| CR # | Summary | Description/How to reproduce |
|----------|--|---|
| WG-11857 | Warning message shows up every time login is done If the optional parameters in the custom model are not used during the execution | The problem has been fixed and the messages no longer appear. |
| WG-11923 | Display Method names in the Adjustment panel do not match the names used in ERDAS IMAGINE | The names in these scenarios have been changed to match for improved consistency. |
| WG-12011 | File upload fails sometimes | When uploading files using the “Add to shoebox” dialog the files are broken into smaller chunks. Based on the file size this process could produce chunks that were larger than a desired limit (2MB). This would cause seemingly random failures during file upload. |
| WG-11692 | Labels in the Contents panel do not match Display Method names in the Adjustment Panel | The names in these scenarios have been changed to match for improved consistency. |
| WG-11822 | Improved error handling of timed out requests | Some requests that had timed out were not being properly detected and handled. This has been corrected. |
| WG-11979 | Improved the UI of the “Add to Shoebox” dialog on smaller screens and in split view | Some items were not properly arranged when the display was reduced too far. This has now been corrected. |
| WG-3291 | Improved handling of non-georeferenced images | The application no longer allows displaying such images in the map view. |
| WG-2635 | Create Stereo Pair geoprocess handles output file names with dots | It is now possible to create output files with names like “foo.left.img” and “foo.right.img”. |
| WG-9234 | Build in printing templates “AI Tempalte” and “Basic Map” templates handle non-georeferenced images | The templates failed to load for non-georeferenced images |
| WG-7419 | Classify feature geoprocessing service is failing if the output file name contains a parenthesis. | It is now possible to use parenthesis in the name of the output file of “Classify Feature” geoprocess - “foo(bar).shp” is a valid filename. |



About Hexagon

Hexagon is a global leader in digital reality solutions, combining sensor, software and autonomous technologies. We are putting data to work to boost efficiency, productivity, quality and safety across industrial, manufacturing, infrastructure, public sector, and mobility applications.

Our technologies are shaping production and people-related ecosystems to become increasingly connected and autonomous – ensuring a scalable, sustainable future.

Hexagon's Safety, Infrastructure & Geospatial division improves the resilience and sustainability of the world's critical services and infrastructure. Our solutions turn complex data about people, places and assets into meaningful information and capabilities for better, faster decision-making in public safety, utilities, defense, transportation and government.

Hexagon (Nasdaq Stockholm: HEXA B) has approximately 22,000 employees in 50 countries and net sales of approximately 4.3bn EUR. Learn more at [hexagon.com](https://www.hexagon.com) and follow us [@HexagonAB](https://twitter.com/HexagonAB).



Copyright

© 2022 Hexagon AB and/or its subsidiaries and affiliates. All rights reserved

Warning: The product made the subject of this documentation, including the computer program, icons, graphical symbols, file formats, audio-visual displays and documentation (including this documentation) (collectively, the “Subject Product”) may be used only as permitted under the applicable software license agreement, and subject to all limitations and terms applicable to use of the Subject Product therein. The Subject Product contains confidential and proprietary information of Intergraph Corporation, a member of the Hexagon Group of companies (“Hexagon”), its affiliates, and/or third parties. As such, the Subject Product is protected by patent, trademark, copyright and/or trade secret law and may not be transferred, assigned, provided, or otherwise made available to any third party in violation of applicable terms and conditions cited further below.

Terms of Use

By installing, copying, downloading, accessing, viewing, or otherwise using the Subject Product, you agree to be bound by the terms of the EULA found here: https://www.hexagonsafetyinfrastructure.com/-/media/Legal/Hexagon/SI/Licenses/EULA_SA_SIG-Eng_062021.pdf.

Disclaimers

Hexagon and its suppliers believe the information in this publication is accurate as of its publication date. Hexagon is not responsible for any error that may appear in this document. The information and the software discussed in this document are subject to change without notice.

Language Translation Disclaimer: The official version of the Documentation is in English. Any translation of this document into a language other than English is not an official version and has been provided for convenience only. Some portions of a translation may have been created using machine translation. Any translation is provided “as is.” Any discrepancies or differences occurring in a translation versus the official English version are not binding and have no legal effect for compliance or enforcement purposes. Hexagon disclaims any and all warranties, whether express or implied, as to the accuracy of any translation.

Reasonable efforts have been made to provide an accurate translation; however, no translation, whether automated or provided by human translators is perfect. If any questions arise related to the accuracy of the information contained in a translated version of Documentation, please refer to its official English version. Additionally, some text, graphics, PDF documents, and/or other accompanying material may not have been translated.

Links To Third Party Websites

This Document may provide links to third party websites for your convenience and information. Third party websites will be governed by their own terms and conditions. Hexagon does not endorse companies or products to which it links.

Third party websites are owned and operated by independent parties over which Hexagon has no control. Hexagon shall not have any liability resulting from your use of the third party website. Any link you make to or from the third party website will be at your own risk and any information you share with the third party website will be subject to the terms of the third party website, including those relating to confidentiality, data privacy, and security.

Hexagon provides access to Hexagon international data and, therefore, may contain references or cross references to Hexagon products, programs and services that are not announced in your country. These references do not imply that Hexagon intends to announce such products, programs or services in your country.

Revisions



Hexagon reserves the right to revise these Terms at any time. You are responsible for regularly reviewing these Terms. Your continued use of this Document after the effective date of such changes constitutes your acceptance of and agreement to such changes.

Questions

[Contact us](#) with any questions regarding these Terms.